



Calibrated Route Finder

- use and practical experiences

Gunnar Svenson, Skogforsk, Uppsala, Sweden

Patrik Flisberg, Skogforsk, Uppsala, Sweden

Mikael Rönnqvist, Université Laval, Québec, Canada



SSAFR 2015

August 19 – 21, 2015. Uppsala, Sweden



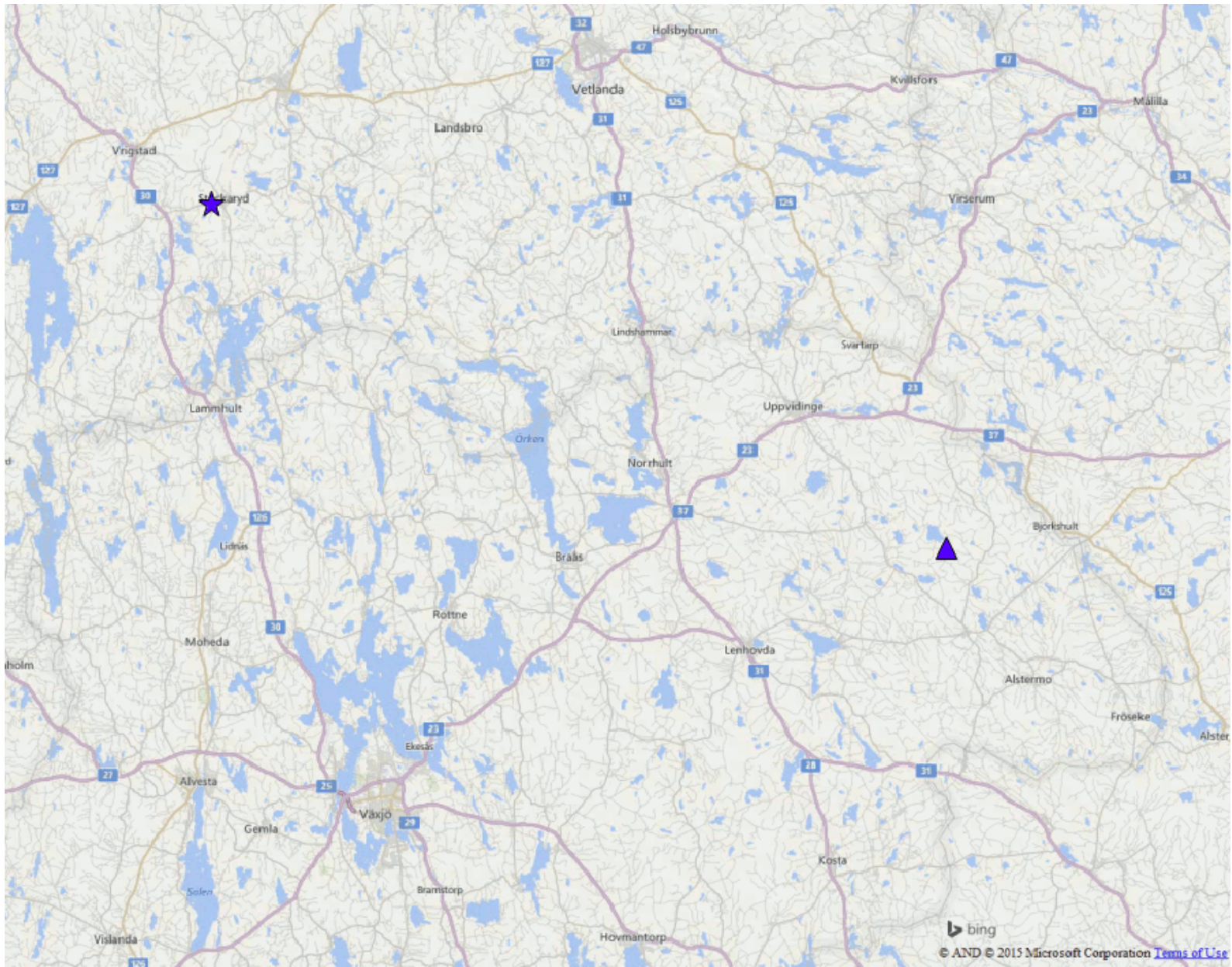
UNIVERSITÉ
LAVAL

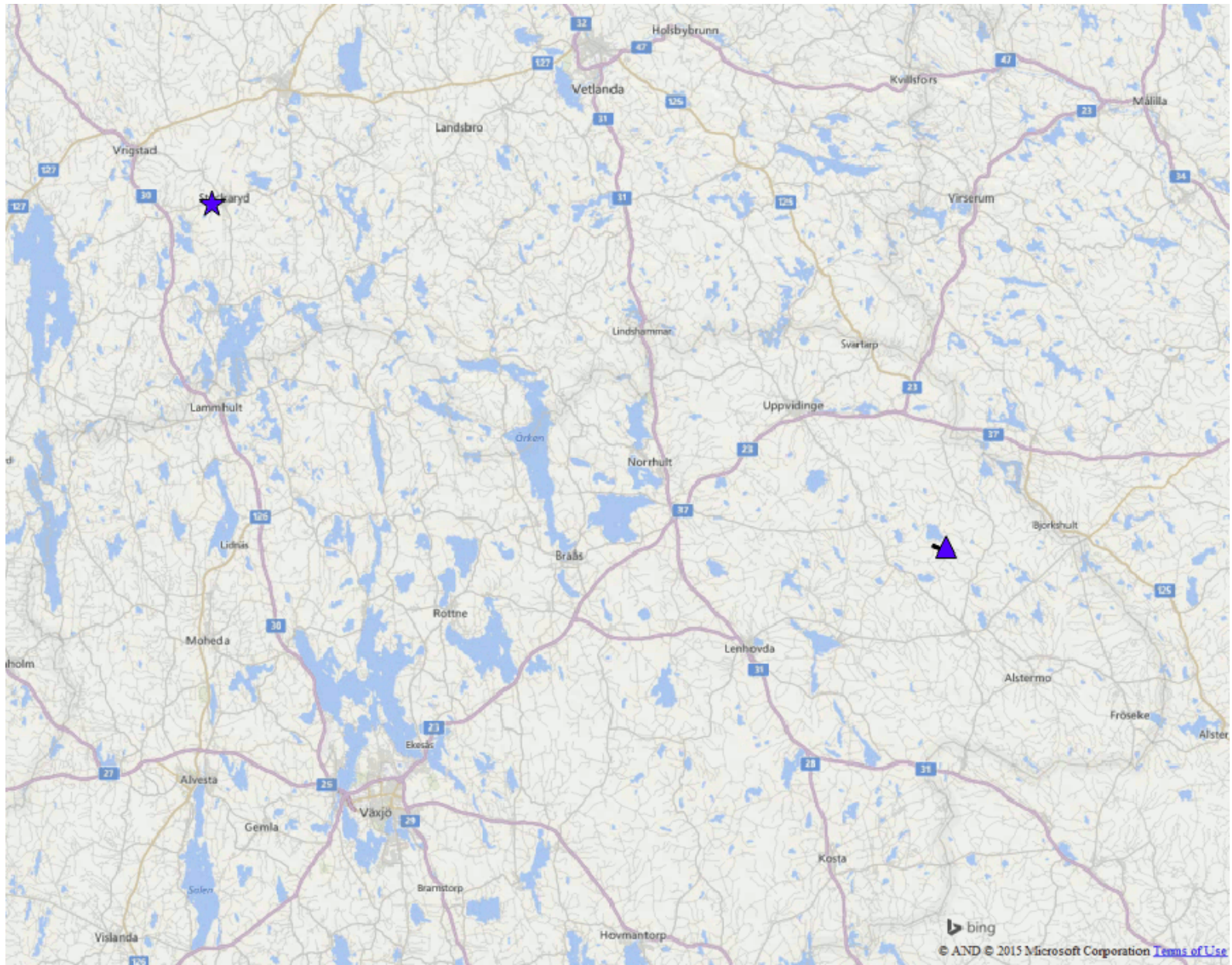
Sweden:
Length - 25 m
GVW - 64 tons

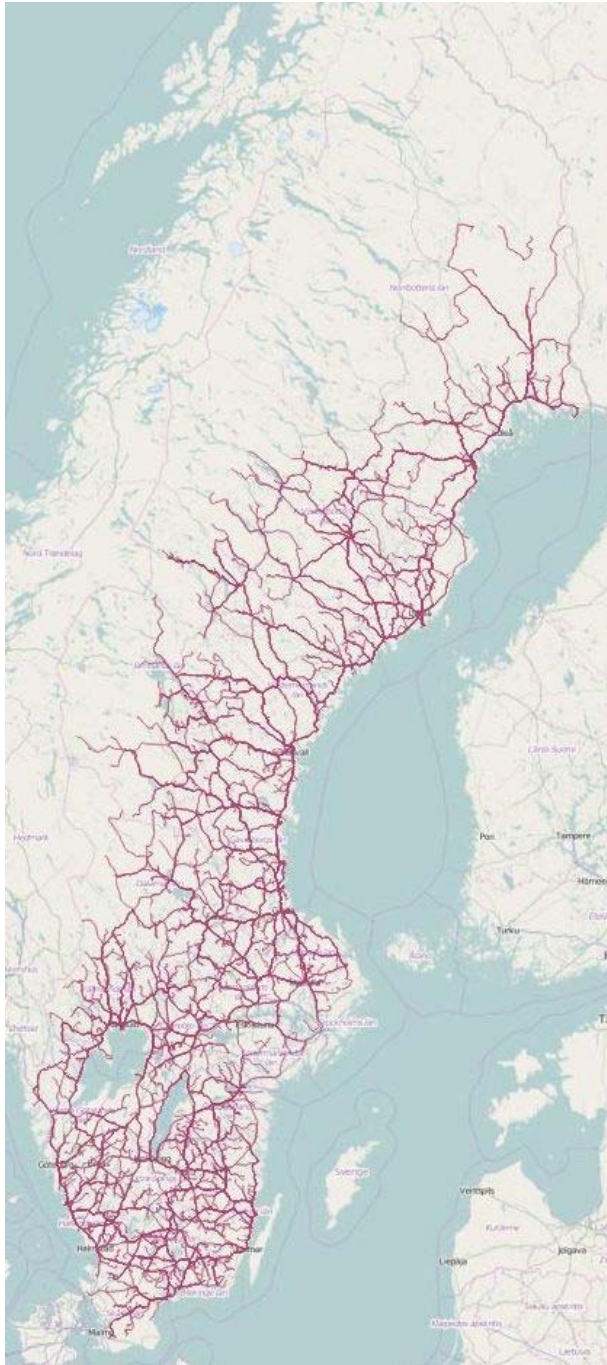
Europe (standard):
Length - 18 m
GVW - 40 tons











1500 key-routes:
Best practice agreed between
forest and transport companies

Translation process

Road feature (No. attributes)

- Functional road class (10)
- Maximum speed (13)
- Road width (16)
- Bearing class (4)
- Terrain class (3)
- Road owner (3)
- Timber route (2)
- Passing route (2)
- Length (1)
- Ferry line (1)
- Surface type (2)

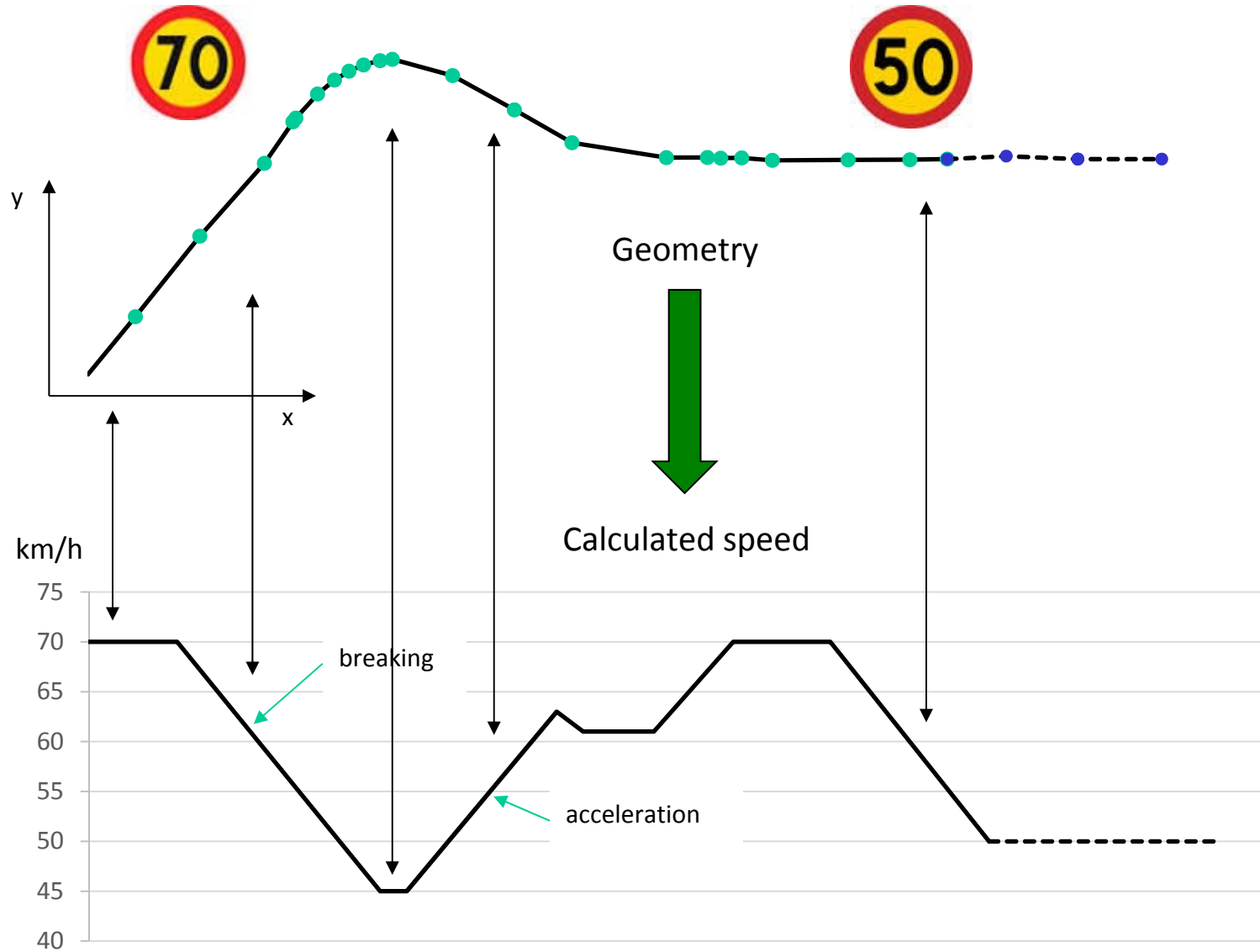
Translation process

Road feature (No. attributes)

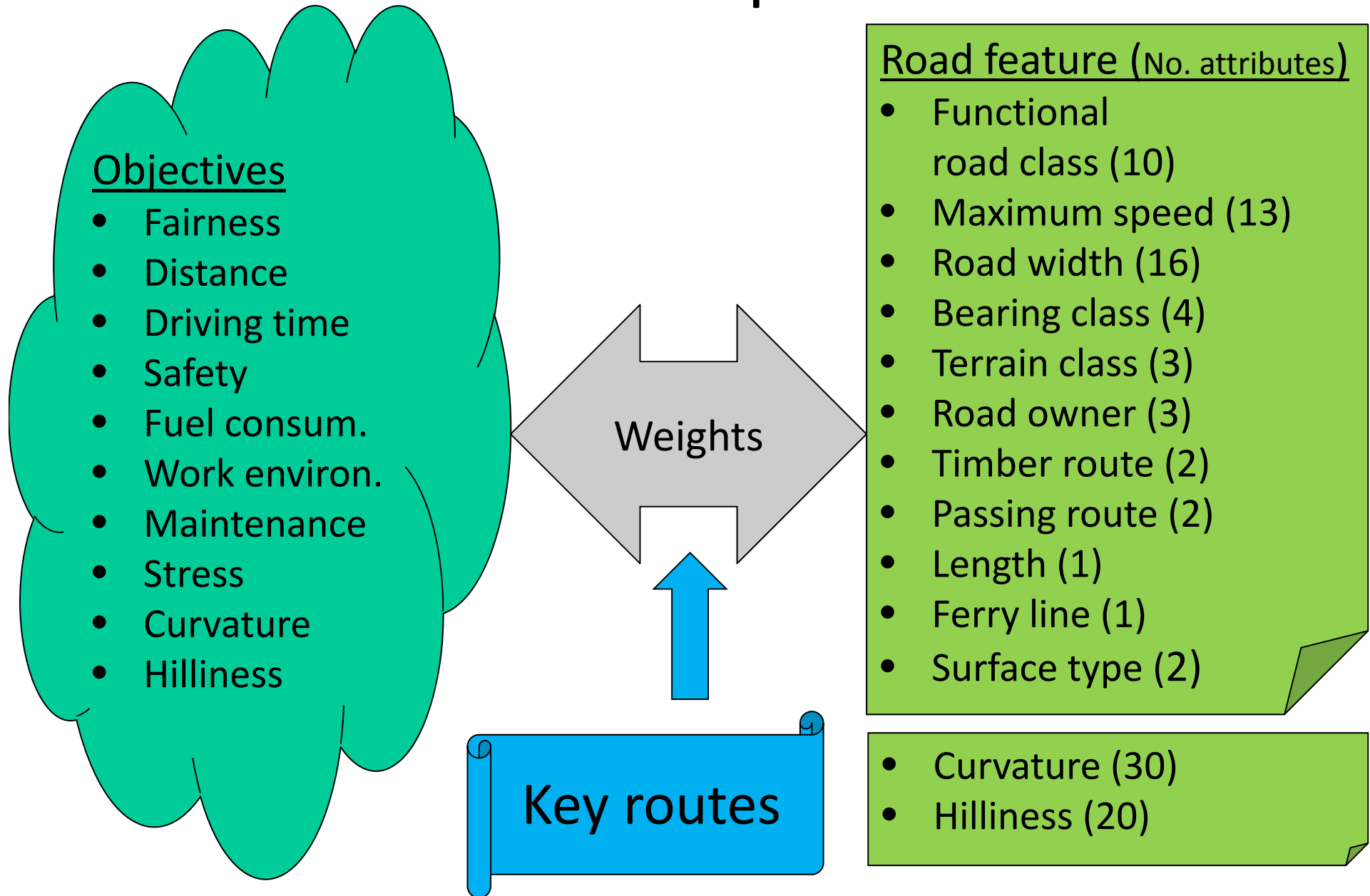
- Functional road class (10)
- Maximum speed (13)
- Road width (16)
- Bearing class (4)
- Terrain class (3)
- Road owner (3)
- Timber route (2)
- Passing route (2)
- Length (1)
- Ferry line (1)
- Surface type (2)

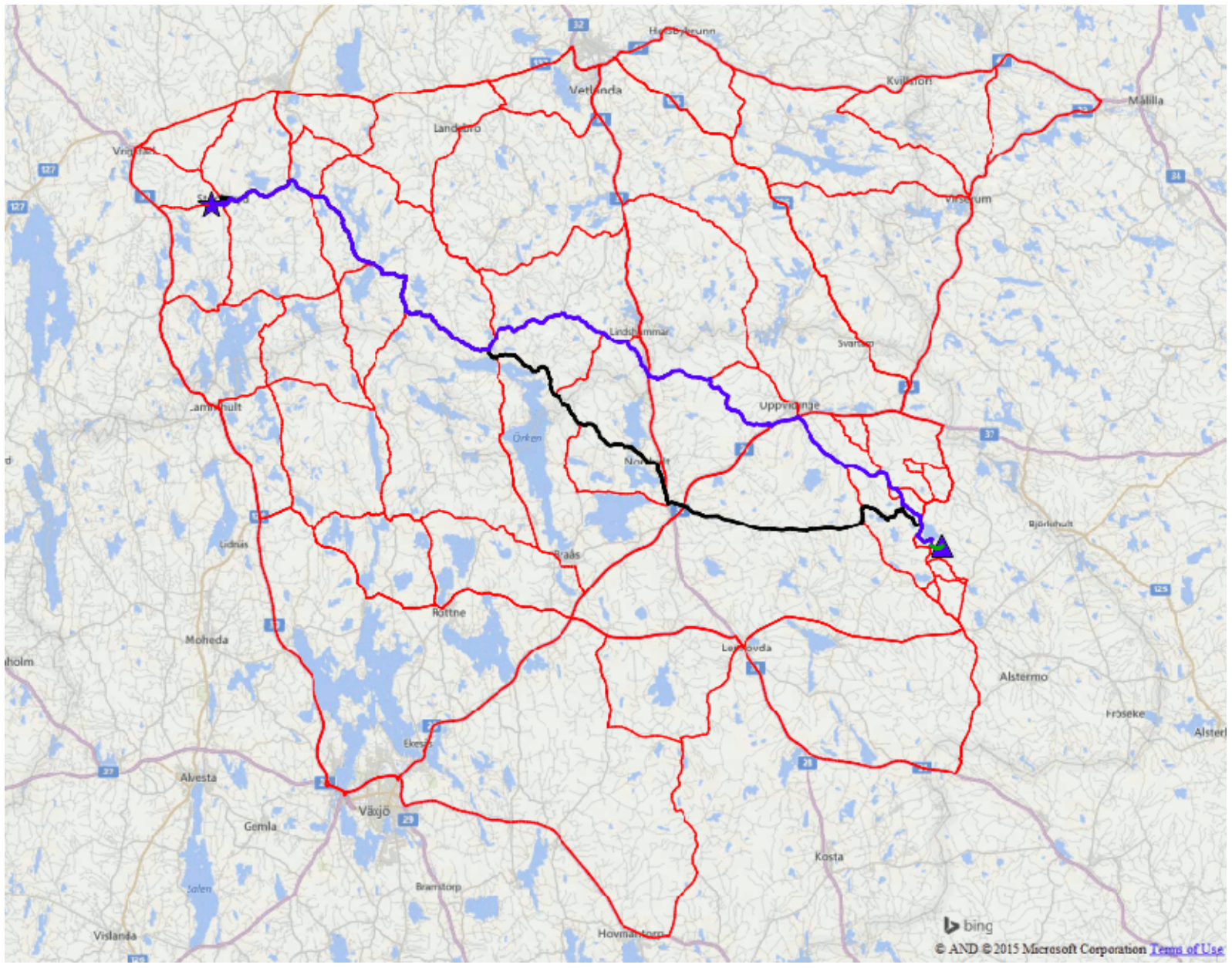
- Curvature (30)
- Hilliness (20)

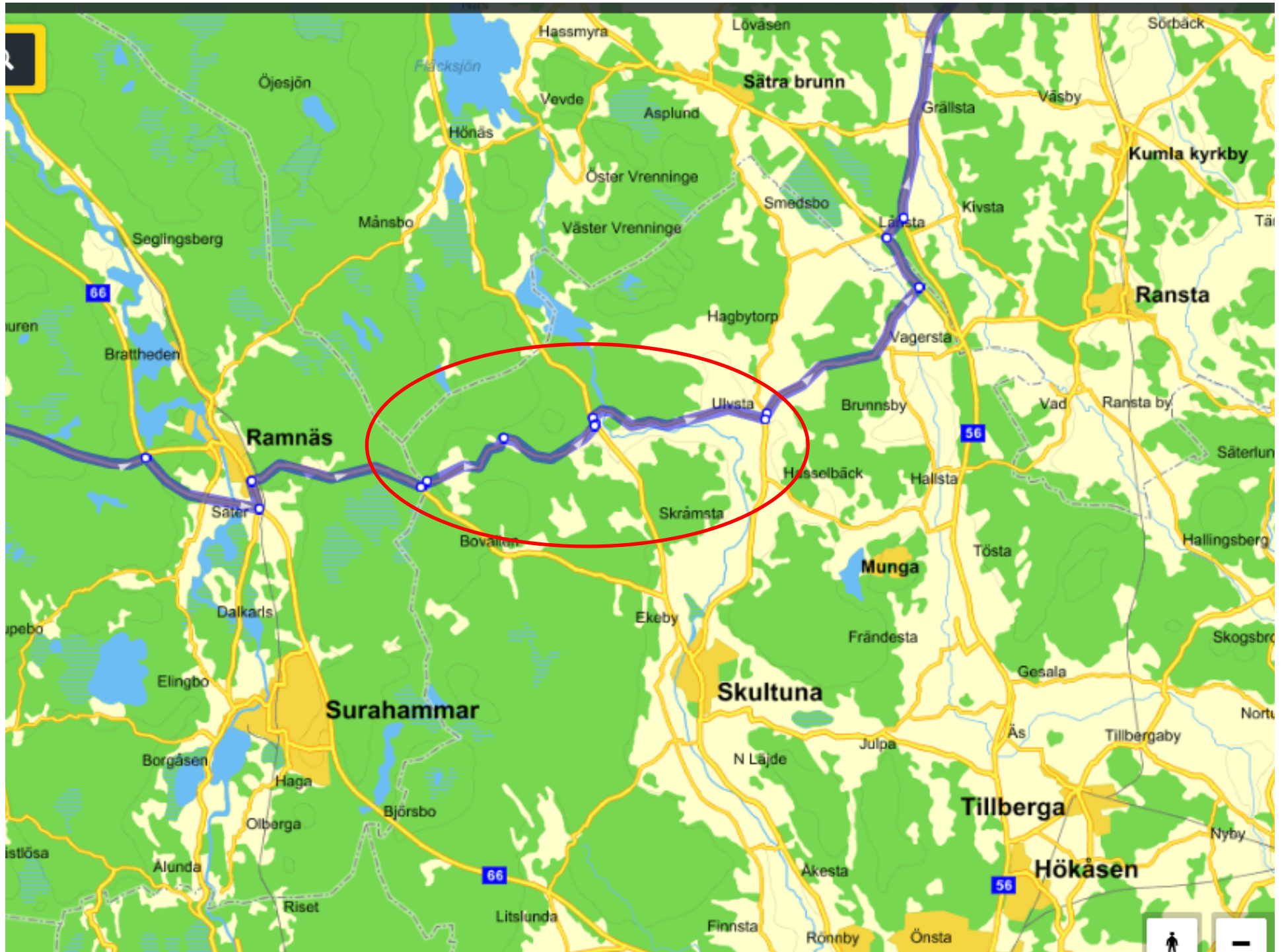
Curvature - example



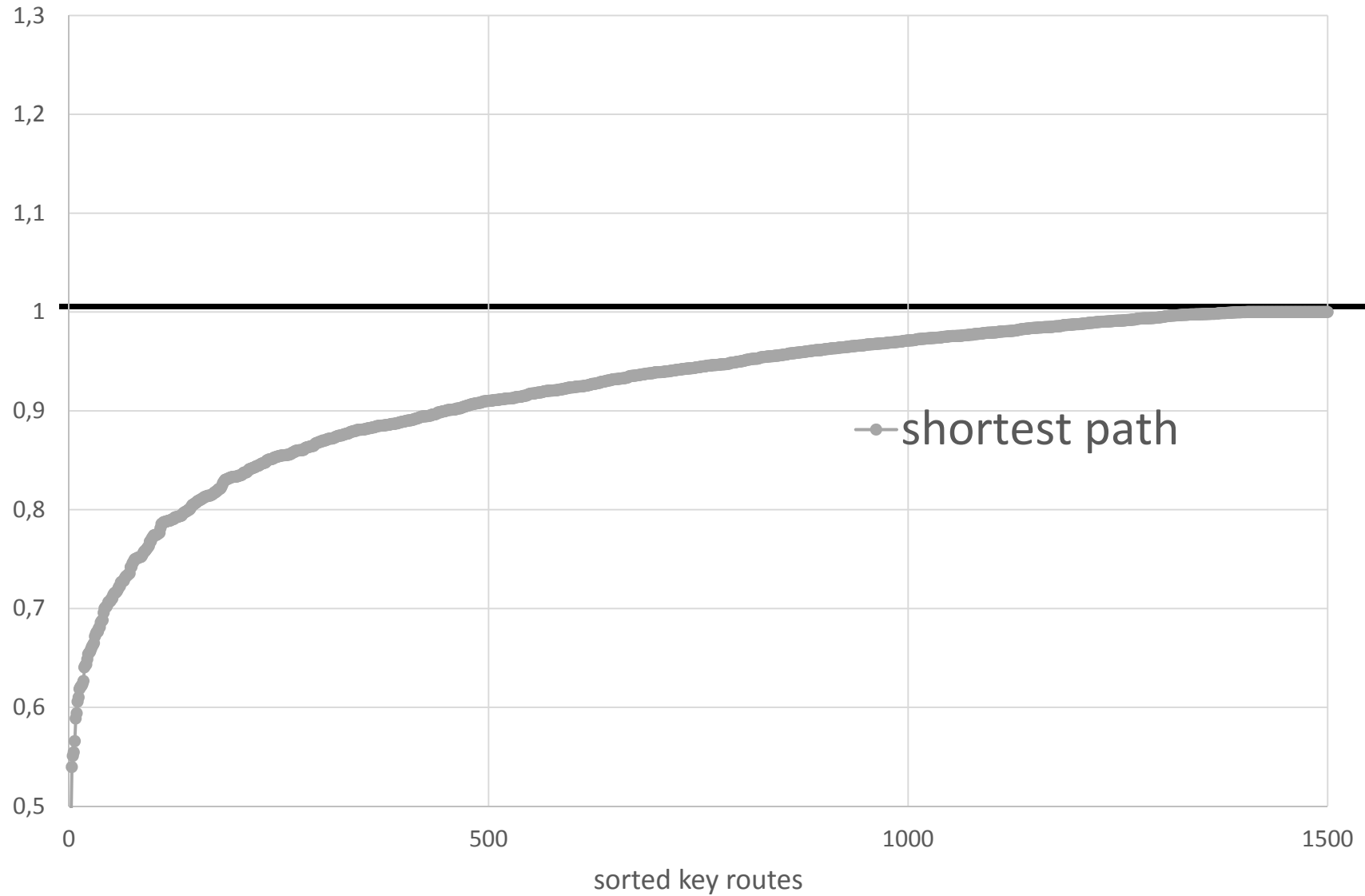
Translation process



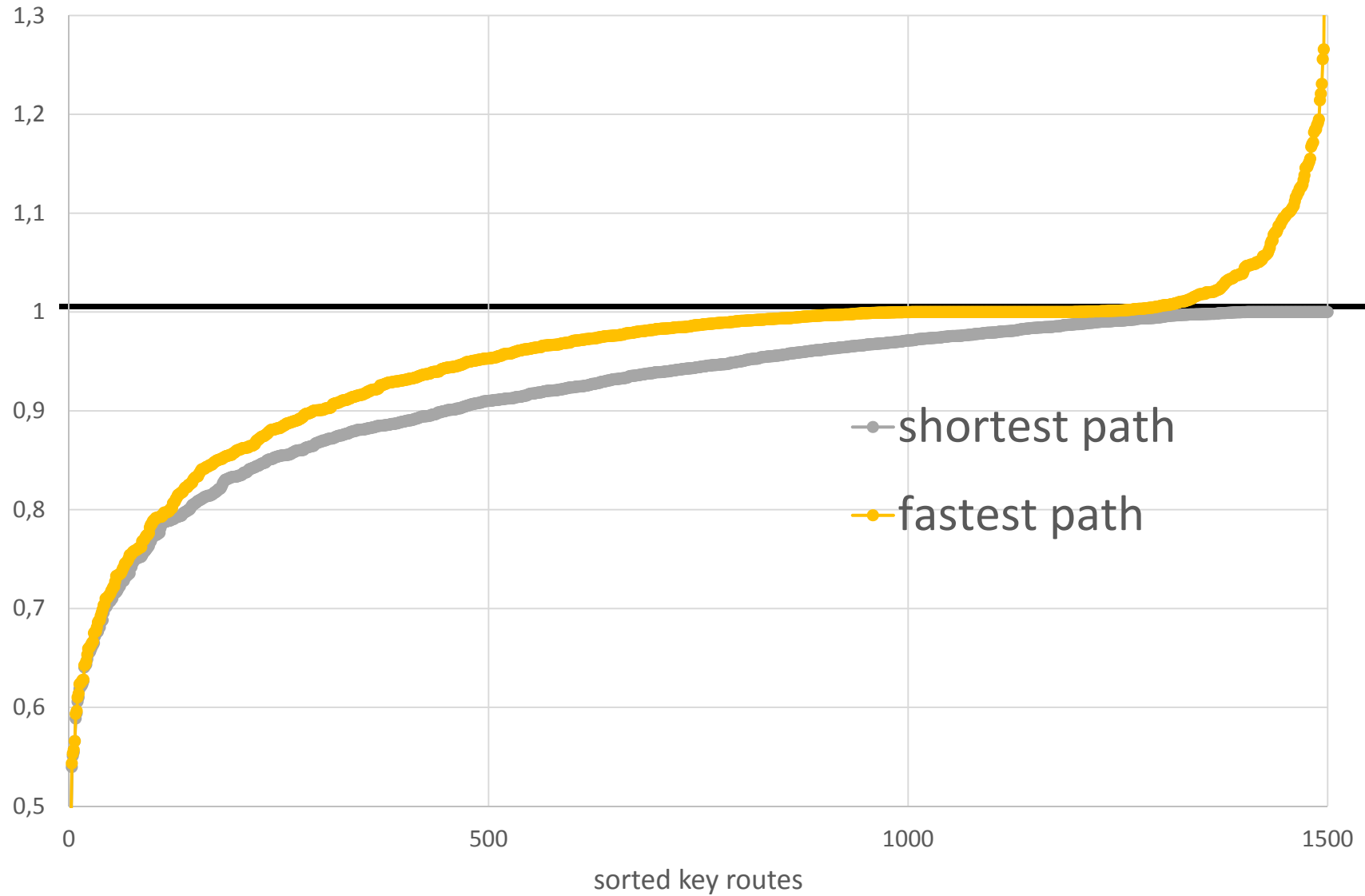




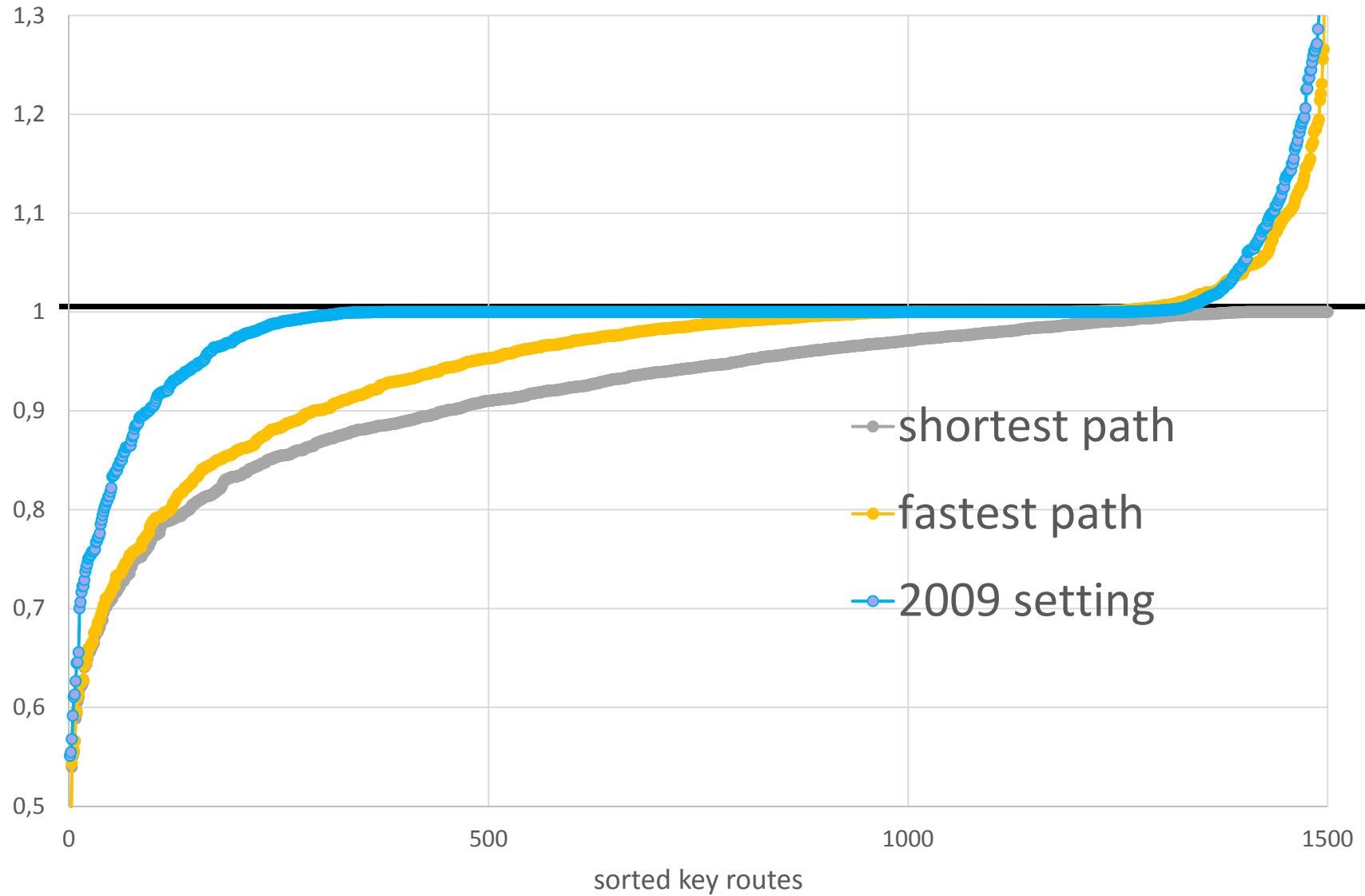
Generated routes related to normalized key routes



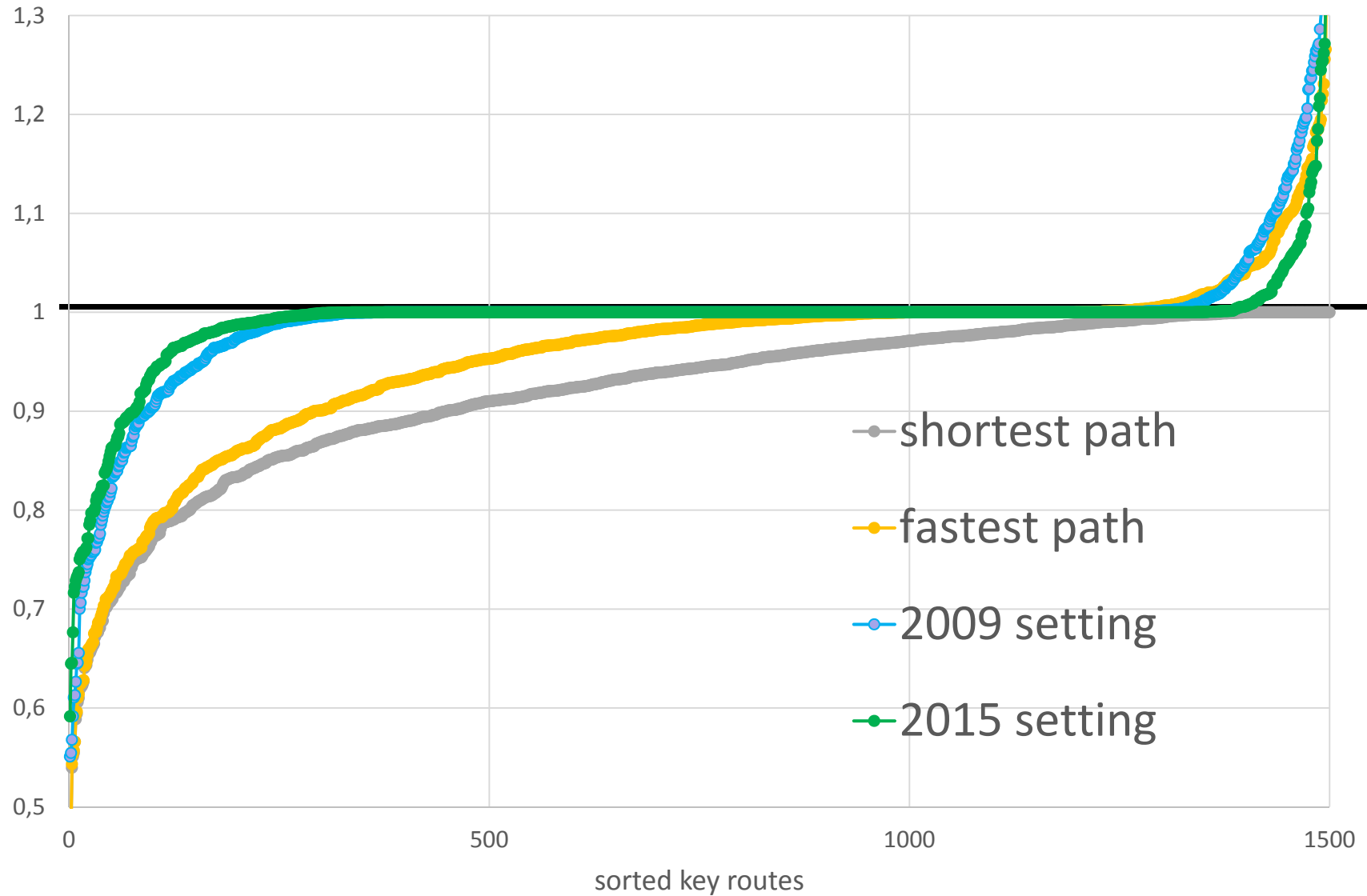
Generated routes related to normalized key routes



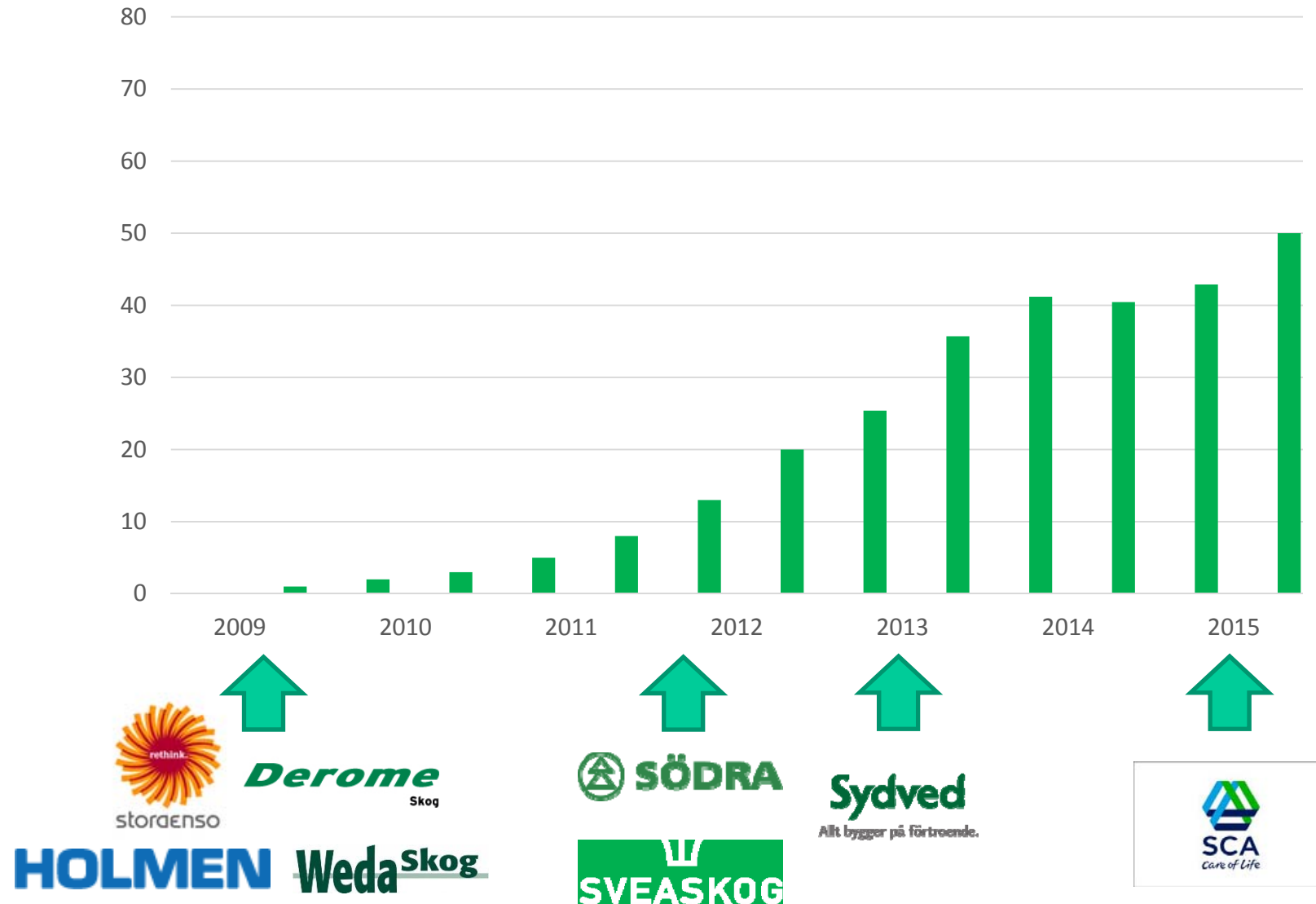
Generated routes related to normalized key routes

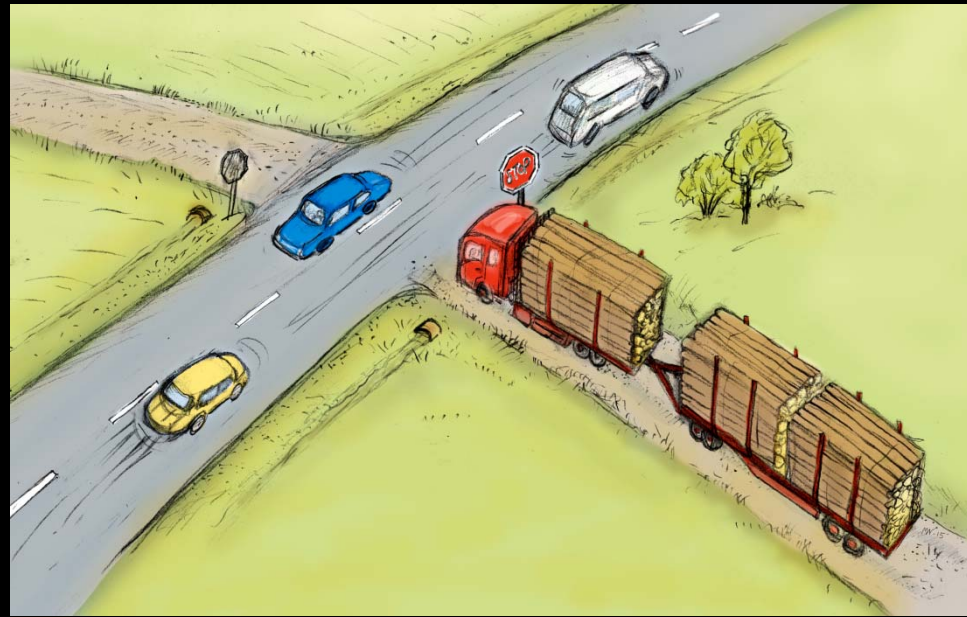
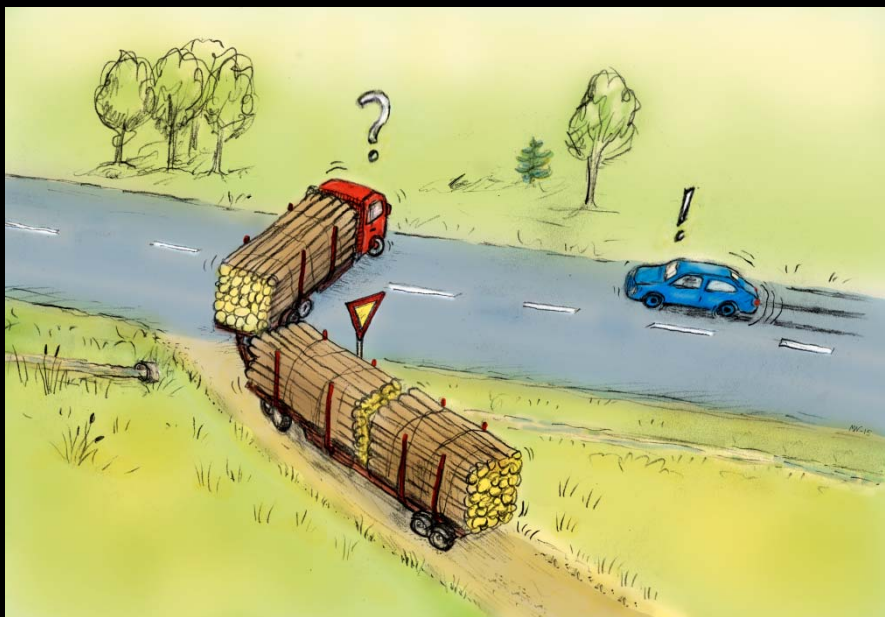
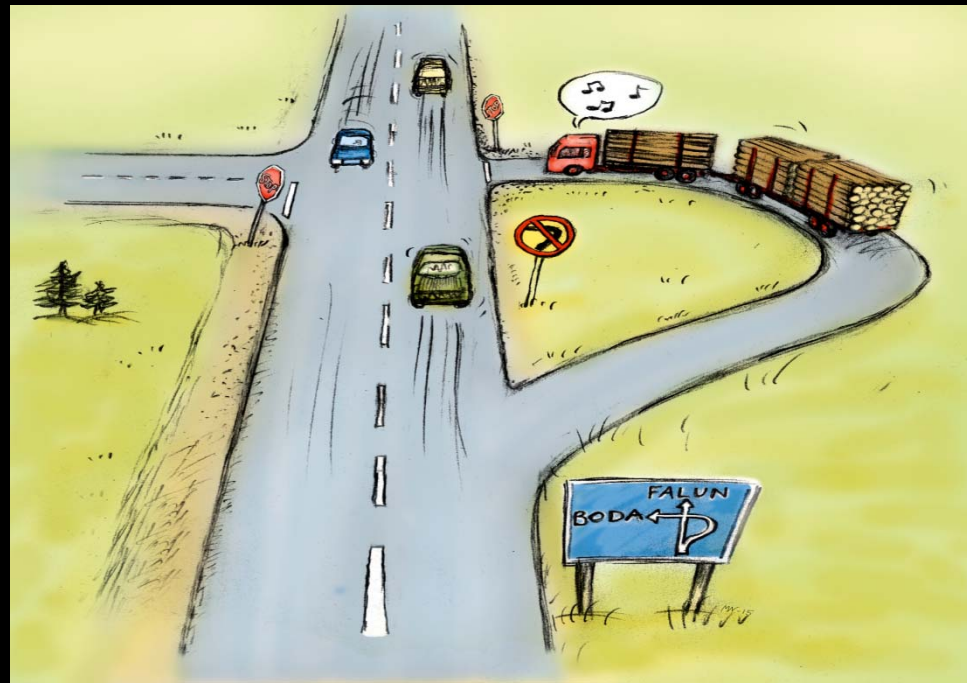
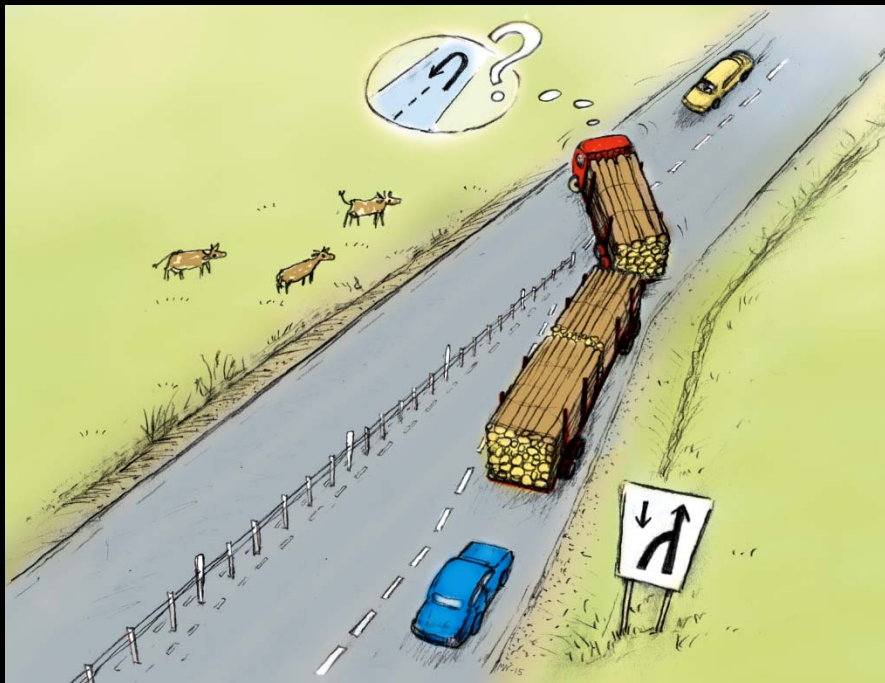


Generated routes related to normalized key routes



CRF – Development over time







Calibrated Route Finder *– use and practical experiences*

Gunnar Svenson, Skogforsk, Uppsala, Sweden

Patrik Flisberg, Skogforsk, Uppsala, Sweden

Mikael Rönnqvist, Université Laval, Québec, Canada



SSAFR 2015

August 19 – 21, 2015. Uppsala, Sweden



UNIVERSITÉ
LAVAL